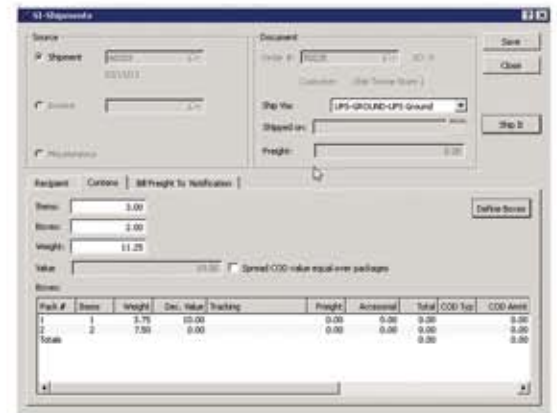


## OVERVIEW

This fully integrated shipping solution allows to process shipments from within the Ship Sales Order, Create Invoice and Shiplt Workbench. It allows you to create multiple packages/boxes and automatically calculate the weight of them by using the weight field from the xTuple inventory, also it automatically and accurately calculates the insurance value for each package and allows you to assign 3rd party billing from account number stored in the xTuple customer record, all seamlessly integrated.

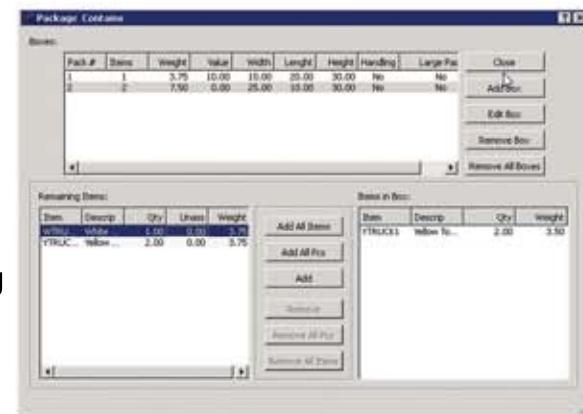


Pack #	Items	Weight	Decl. Value	Tracking	Freight	Accession	Total	COO Fee	COO Assnt
1		3.75	10.00		0.00	0.00	0.00	0.00	0.00
2		7.50	0.00		0.00	0.00	0.00	0.00	0.00
Totals									

## FEATURES

### Lite Version

- Prints carrier approved Shipping Labels after saving each Shipment.
- It writes back to the xTuple invoice a detail of the shipment to include, package weight, value, freight amount, insurance amount, tracking number, etc. All this information is maintained on a separate invoice child table for easy access.
- Amend shipments function as long as the shipment has not been closed for the day.
- It allows to build a cross reference table for shipping carries to match to SHIP IT available carries.
- 3rd Party, consignee & Multiple email notification defined by Customer.
- Dimensional weight Inventory cross reference table.
- Create and submit Return Labels and Electronic call tags.
- Track shipments within xTuple.
- Package Tracking Report allows viewing, printing or faxing Invoiced package information from within xTuple



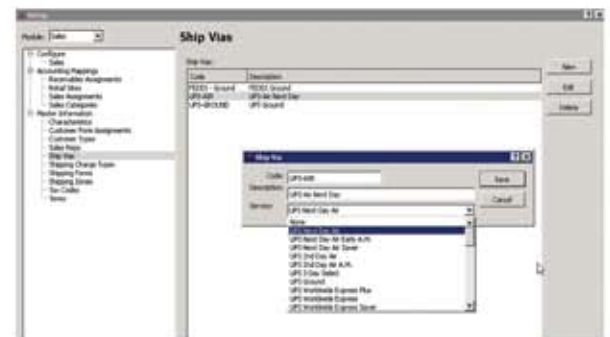
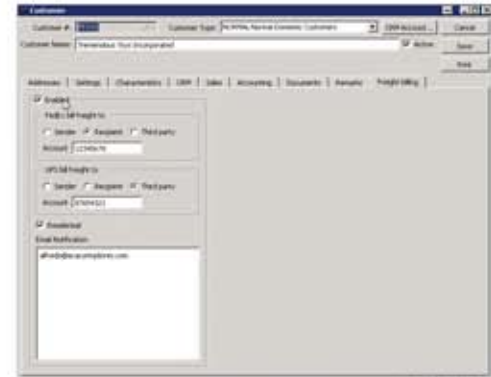
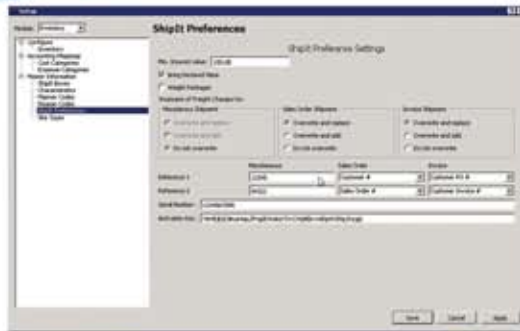
Pack #	Items	Weight	Value	Width	Length	Height	Handling	Large Pcs	Close
1		3.75	10.00	10.00	20.00	30.00	No	No	Add Box
2		7.50	0.00	25.00	15.00	30.00	No	No	Edit Box

### Pro Version

- Package Definition – it allows to add items to individual or multiple packages and make changes on the fly with simple drag and drop operations
- Integrates with xTuple Create Sales Order, Ship Sales Order & Create Invoice.



## Setup & Maintenance Screens



## OPERATION

The process to create box definitions is almost the same for both the "Ship Sales Order Screen" and the "Create/Amend Invoice" Screen:

- Open the Issue to Shipping, Select order, select which items are shipping, click "Ship"
- Click on Ship from the Ship Order Screen
- This will open the ShipIT Screen.
- Open the box definition screen by clicking on the "Define Contents" button in the ShipIT Interface button set.
- Create the box definitions by creating boxes and assigning items to them.
- Close the definition screen and click the "Send to ShipIT" button in the ShipIT Interface button set.
- The information is sent to ShipIT. At this point, the ShipIT interface window will open. All the package information, including carrier and terms will be preloaded onto the form.
- Make any necessary adjustments (if any), and save the shipment. Focus is then returned to xTuple.
- All the information generated by ShipIT is returned to xTuple and can be seen by opening the package definition screen.
- Go to next order.

### System Requirements:

- Windows XP, Vista, Windows 7, Windows 8, Windows TS
- Postbooks, xTuple starting on 3.8.1 and up
- AKA ShipIT Interface Package with ShipRush Licence

### Supported Carriers:

- UPS (US & Canada)
- FedEx (US & Canada)
- USPS (Stamps.com US only)