

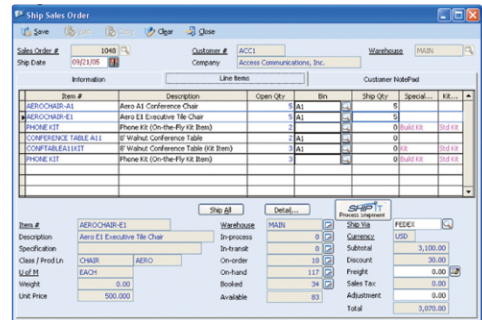
OVERVIEW

This fully integrated shipping solution will allow for you to process shipments from within the Ship Sales Order and or Create Invoice Screens. It allows you to create multiple packages/boxes and automatically calculate the weight of them by using the weight field from the AccountMate inventory, also it automatically and accurately calculates the insurance value for each package and allows you to assign 3rd party billing from account number stored in the AccountMate customer record, all seamlessly integrated.



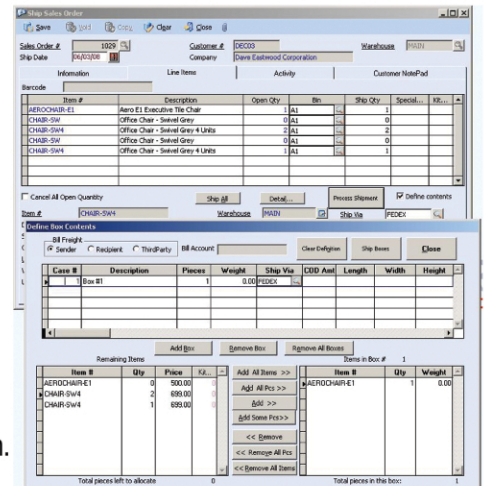
FEATURES

- Package Definition – it allows to add items to individual or multiple packages and make changes on the fly, with simple drag and drop operations
- Prints carrier approved Shipping labels after saving each invoice or in batch
- It writes back to the AccountMate invoice a detail of the shipment to include, package weight, value, freight amount, insurance amount, tracking number, etc. All this information is maintained on a separate invoice child table for easy access.
- It allows to amend shipments within the Amend Invoice function as long as the shipment has not been closed for the day.
- It allows to build a cross reference table for shipping carries to match to SHIP IT available carries.
- New Package tracking and information Screen that allows to view, print and fax invoice package information from within AccountMate.



DETAILS

The system allows you to create package definitions on the ship sales order screen and the create/ amend invoice screen. It also supports auto-invoice generation, so if this function is used, the boxes will automatically be assigned to their corresponding invoice. An additional box has been added in the customer maintenance form. This box defines the default for freight billing for each individual customer and the account number to be billed if "Recipient" or "Third Party" is selected. Modification of packages after they are sent to starship is allowed, as long as the end of day has not been processed. The system provides a setup window for term and carrier mapping so existing items in VAM can be mapped to their corresponding items in SHIP IT. (e.g. if you have set up "UPS" in AccountMate, you will want to map it to "UPS Ground" in SHIP IT).



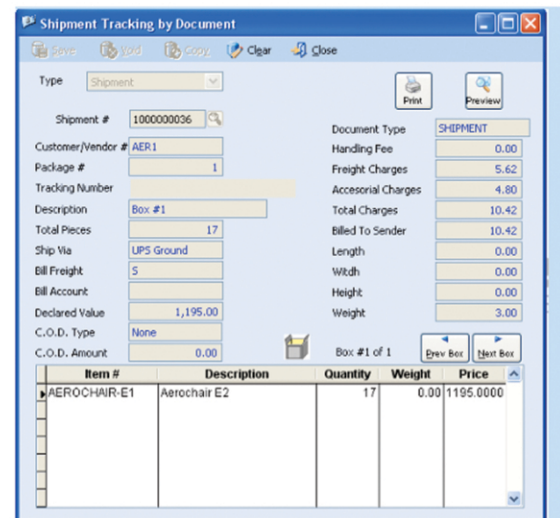
LTL Rating

LTL BOL Printing

SHIPMENT TRACKING

Powerful tracking system completes this great interface below is an example on how Shipment Tracking works.

Shipment Tracking					
Bill To:			Ship To:		
Corporate Office Systems 2315 Oldland Road Ste 12 San Jose, CA CA 95131 USA			Corporate Office Systems 2315 Oldland Road Ste 12 San Jose, CA CA 95131 USA		
Invoice No.	10105				
Customer No.	COR97				
Ship Date	SO #	Order Date	Ordered By	PO #	Total Shipping Charges
08/21/04	1013	08/21/04	Mark Anthony Keller		\$32.21
Case #	Box #	Tracking Number	Qty	Unit	Price
AEROCHAIR-A1	Aero A1 Conference Chair		1		\$120.00
Package Weight:		56.03	1		\$6.00



Item #	Description	Quantity	Weight	Price
AEROCHAIR-E1	Aerochair E2	17	0.00	1195.0000

OPERATION

The process to create box definitions is almost the same for both the "Ship Sales Order Screen" and the "Create/Amend Invoice" Screen:

1. Select the sales order/invoice to ship (or create a new invoice).
2. Enter the quantities to be shipped.
3. Open the box definition screen by clicking on the "Define Contents" button in the SHIP IT Interface button set.
4. Create the box definitions by creating boxes and assigning items to them.
5. Close the definition screen and click the "Send to SHIP IT" button in the SHIP It Interface button set.
6. The information is sent to SHIP It. At this point, the SHIP IT interface window will open. All the package information, including carrier and terms will be preloaded on the form.
7. Make any necessary adjustments (if any), and save the shipment. Focus is returned to AccountMate. At this point, all the information generated by starship is returned to AccountMate. This information can be seen by opening the package definition screen.
8. Save shipment/invoice in AccountMate.

System & Software Requirements:

- Windows 2000, XP Professional or Vista
- AKA SHIP IT Interface
- AccountMate SQL ver 5 and above
- AccountMate Lan 5 & Above